

# CRAFTWAND<sup>®</sup>

Sustainable working  
and living



CRAFTWAND<sup>®</sup> is a product of

**nature<sup>™</sup>**  
**systems**

# CONTENTS

Introduction	1
The System	2
Design Options	3
Sustainability	14

## Introduction

CRAFTWAND® is natural – pure solid wood, while the ingenious patented inter-locking solution enables the construction of interior walls, space dividers as well as object designs, with endless creative possibilities, and if needs be, over and over again.

The notation '*nothing is more constant than change*' holds true for interior design also. Interior setups do not stand still but keep changing, out of space reconfiguration necessity or under the influence of new attitudes and fashions.

The modular system of CRAFTWAND®, based on dowel pins and screws but no glues, presents an enduring design element allowing clever interior transformations over time from partitions to accent walls or objects, room furnishings or anything in-between, keeping up with the permanent need for spatial reworking or design refreshing.

Depending on retail store circumstances, type of merchandise, interior design style and available space, there is always a place or use for CRAFTWAND® applications. It can serve to segment space as a dividing wall, or to provide privacy for changing booths. It works well as a sophisticated backdrop display for the merchandise, with vertical or horizontal alignment, or it can encircle the containers cluttering small items, in a very unconventional box-design. It can be an engaging wall behind the counter or the cash counter itself, or a refined window makeup. And since designing a retail interior is a never-ending process, a CRAFTWAND® counter can be reconfigured into a changing booth, a box can be switched to an accent wall. And so forth.

CRAFTWAND® can be repeatedly dismantled and cycled back into use, even re-shaped or re-purposed with no loss of quality, looking as great this year as it does the next, the year after that, and the years thereafter. The installation is fast and easy, with no dirt or debris, or damage to the pre-existing finishes. In line with the circular economy approach, the system is characterized by its durability and recirculation potential.

CRAFTWAND® – modular, versatile, lasting.

## The System

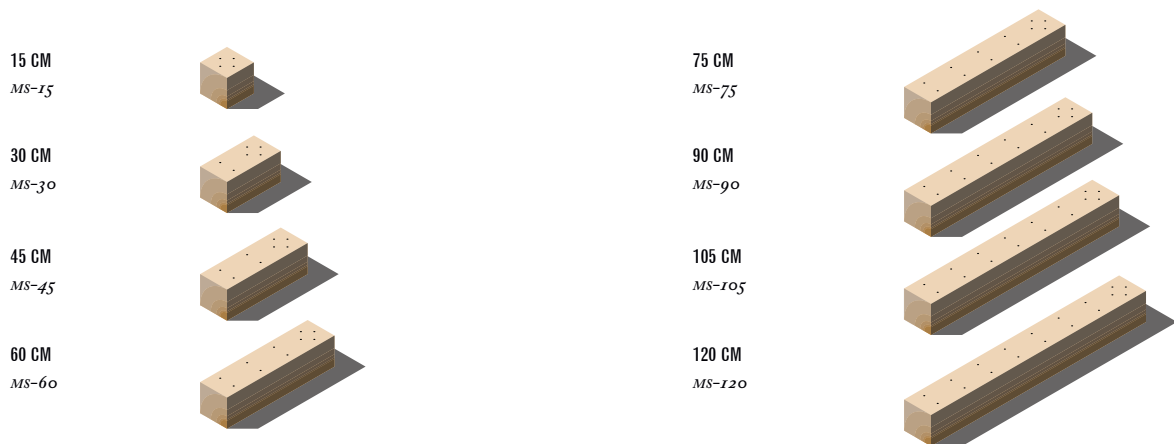
The modular construction of CRAFTWAND® sets it apart in the world of interior design. The individual wood modules are crafted with an invisible interlocking solution which enables an easy and highly ingenious assembly and, as the case may be, a similarly effortless dismantling and reconstructing in a different place or position.

With few tools, some dowel pins and screws, but no glues, CRAFTWAND®'s simple mounting and nonetheless functional and indestructible qualities is a testimony for "less is more".

Moreover, the natural diversity of wood patterns and the dynamic of countless combinative arrangements between different wood modules stand for "wood is more".

### THE SYSTEM IS AS SIMPLE AS THIS:

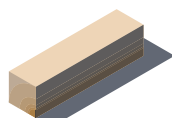
- 150 × 150mm solid wood modules (with 8 length formats 150mm, 300mm, 450mm, 600mm, 750mm, 900mm, 1050mm, 1200mm)
- in-built interlocking solution with pre-drilled holes
- connecting accessories (dowel pins, nails and inserts)
- basic mounting tools: drill machine, hex bits (5 & 6), carpenter clamp, carpenter square, levelling tool, CRAFTWAND® mounting layout.



For very long or high CRAFTWAND® partitions, fixing to other main walls or floor or ceiling may be required for stability. There are 8 specialized modules for floor, ceiling, main wall fastening as well as for invisible inclusion of pipes, wiring, and A/V cables.

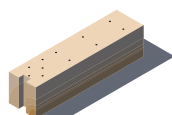
### END MODULES

*MS-15-E, MS-30-E, MS-45-E, MS-60-E, MS-75-E, MS-90-E, MS-105-E, MS-120-E*



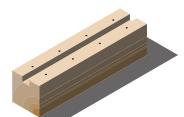
### GROOVED MODULES (VERTICAL)

*MS-15-GV, MS-30-GV, MS-45-GV, MS-60-GV, MS-75-GV, MS-90-GV, MS-105-GV, MS-120-GV*



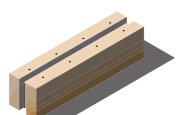
### GROOVED MODULES (HORIZONTAL)

*MS-15-GH, MS-30-GH, MS-45-GH, MS-60-GH, MS-75-GH, MS-90-GH, MS-105-GH, MS-120-GH*



### GROOVED MODULES (HORIZONTAL & VERTICAL)

*MS-15-GH+V, MS-30-GH+V, MS-45-GH+V, MS-60-GH+V, MS-75-GH+V, MS-90-GH+V, MS-105-GH+V, MS-120-GH+V*





# CRAFTWAND<sup>®</sup>

Design Options















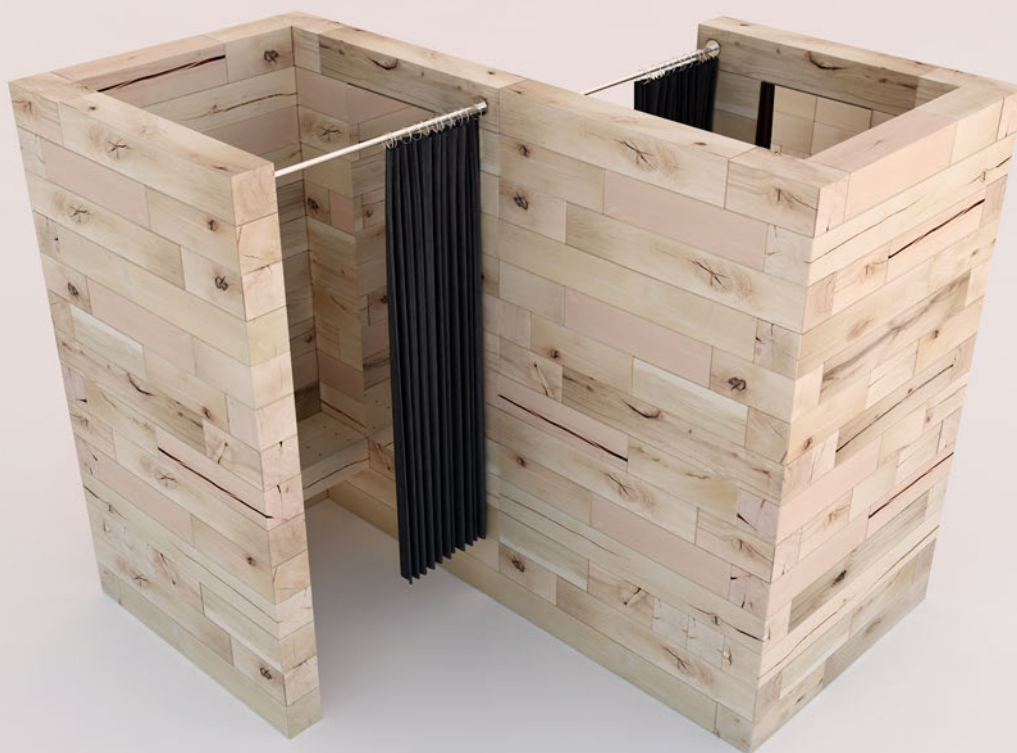






























**CRAFTWAND®**  
Sustainability





## A FEW WORDS ON SUSTAINABILITY

***The forest:** it's the foundation of our lives and our homes, today and in the future, and it must be treated with care. **The wood:** it's a natural, renewable, non-toxic and 100% bio-degradable material, or it can end its life-cycle in the form of green energy. **The sustainability mission:** unlike many other non-renewable materials – plastic, concrete or metal – wood sourced from well-managed forestry operations is limitless. With the focus more and more on sustainable building and lifestyle, wood is the emerging material. **The job we have:** to use this sustainable resource responsibly.*

### WE CARE.

If consensus exists that making products from natural non-toxic materials is nurturing the environment, with CRAFTWAND®, this commitment is completed by the huge responsibility towards the forest resource the material is taken from. Based on a plentiful renewable resource, CRAFTWAND® by design is still mindful of its high worth for present and future generations, therefore it uses low-grade beech logs and sawmill slabs, traditionally underutilized or even discarded in the main-stream quality-hardwood value-added chain. With this forethought, CRAFTWAND® incorporates in the design the genuine nature of beech wood, all the so-called imperfections, and ensures that almost nothing goes to waste. It processes with precedence under-valued stocks, with no trimming or exclusion whatsoever, as long the wood's innate strength is not compromised. Every knot, each shake in the grain, formed as the tree ages or gets injured, blemishes which scarred the tree during its life-cycle, are simply character-signs and count in resource conservation or in enhancing its economic value. CRAFTWAND® — Driven by the goal of minimizing waste.

### WE LIKE THE OLD WAYS.

In CRAFTWAND®'s homeland there is another symbol of old wood working traditions: the steam-powered locomotive called Mocanita, operating on railways built in the mountainous areas of Maramures, Transylvania, and Bukovina in the early 1900s primarily for logging purposes. The historical railways are still being used for logging and cargo shipments in the remote solitary Vasar-Valley in Maramures County and recently efforts are being made to rehabilitate them as tourist attractions of the Carpathian Mountains.

### WE HONOUR CRAFTSMANSHIP.

Old wooden churches, houses, cottages and other woodworks which have survived through centuries are today under protection and conserved as part of our cultural and historical heritage. They teach us a lesson. These architectural structures impress us through their legacy of wisdom and craftsmanship and inherited understanding of nature. And so, we realize in what monotonous or digitally-overwhelming environments we live in. In continuation of centuries-old wood working traditions, CRAFTWAND®'s bare simplicity balances out our tech-full lifestyle.

**WE KNOW ALL ABOUT WOOD...**

Moisture naturally affects the expansion and contraction of wood. Wood is hygroscopic and absorbs or releases water to balance out with its surrounding environment. The fresh-cut beech wood beams must be kiln-dried to approx. 15% moisture content, which is suitable for indoor use. It takes as many as 2-3 months of air-drying and an additional 2-3 months kiln-drying time to reach the moisture level needed for further processing.

CRAFTWAND® — Dried with wind and sun, green energy, human know-how and patience.

**... AND DO OUR BEST TO TREAT IT WITH THE CARE IT DESERVES.**

For us, wood is at the heart of everything we do. It's a piece of the natural world that can be formed and shaped to enrich our lives. Founded in 1995 as a large top-quality hardwood operation with exports in over 30 different countries, we have evolved into an innovative maker of natural wood product designs to furnish the spaces we live in, or work. Promoting sustainability through resource conservation and setting new standards for healthy eco-friendly products are why we do it. The beautiful wood material, natural finishes and laid-back designs are how we do it.



For news and purchasing  
information visit us online  
at [www.craftwand.info](http://www.craftwand.info)